

The cover art features a central circular frame containing a glowing, futuristic church building with a dome of lights. The background is a dark purple and blue gradient with abstract light trails and bokeh effects. The title 'AI & THE CHURCH' is prominently displayed in the center of the circle.

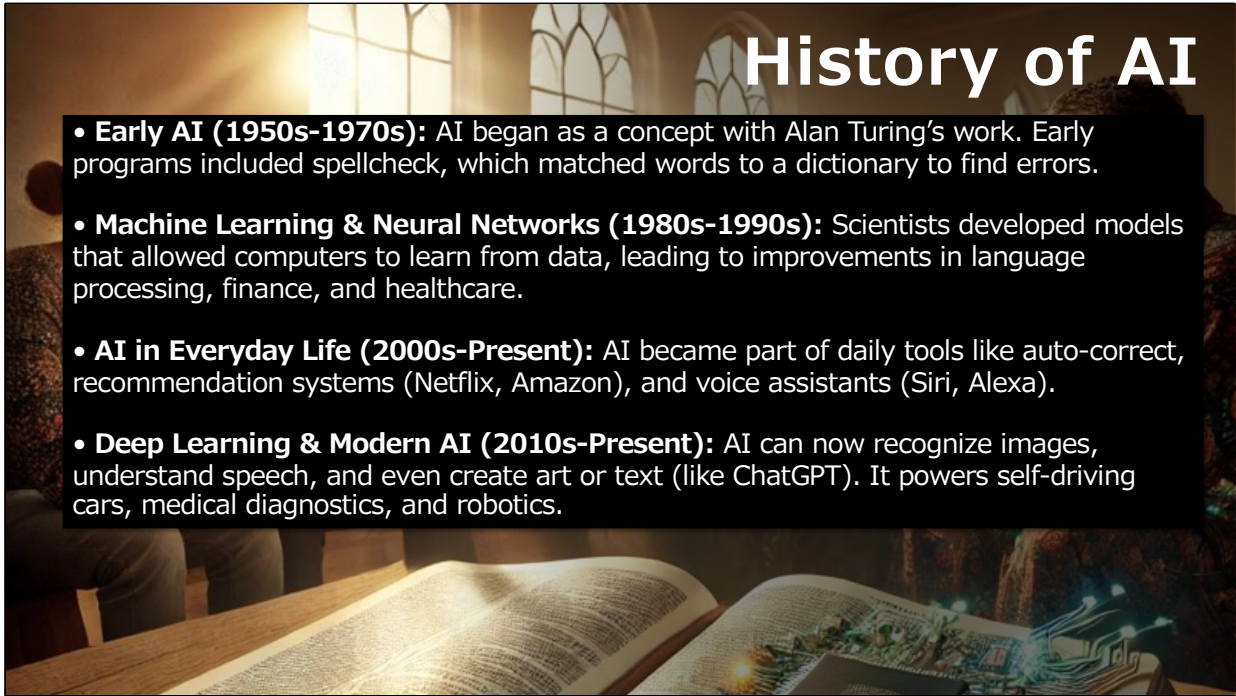
AI & THE CHURCH

ETHICS, TOOLS, AND FAITHFUL INNOVATION

DR. CRAIG CURTIS
EFCA DISTRICT CONFERENCE 2025



Never use it
Use it for everything



History of AI

- **Early AI (1950s-1970s):** AI began as a concept with Alan Turing's work. Early programs included spellcheck, which matched words to a dictionary to find errors.
- **Machine Learning & Neural Networks (1980s-1990s):** Scientists developed models that allowed computers to learn from data, leading to improvements in language processing, finance, and healthcare.
- **AI in Everyday Life (2000s-Present):** AI became part of daily tools like auto-correct, recommendation systems (Netflix, Amazon), and voice assistants (Siri, Alexa).
- **Deep Learning & Modern AI (2010s-Present):** AI can now recognize images, understand speech, and even create art or text (like ChatGPT). It powers self-driving cars, medical diagnostics, and robotics.

Turing Machine- Early Computing 0-1
Machine Learning- spellcheck
AI in Everyday Life-
Deep Learning-



WHERE DOES AI FIT IN THE CHURCH?

- AI IS RAPIDLY EVOLVING AND IMPACTING EVERY INDUSTRY
- THE CHURCH MUST ENGAGE THOUGHTFULLY
- AI IS SEMI-NEUTRAL

WHAT WE'LL COVER:

1. THEOLOGICAL & ETHICAL FRAMEWORK FOR AI USE.
2. THE SHIFT FROM INFORMATION SCARCITY TO DISCERNING TRUTH.
3. PRACTICAL AI TOOLS FOR MINISTRY.
4. KEY PRINCIPLES FOR RESPONSIBLE AI USE.
5. LIVE AI DEMONSTRATION.





AI as a tool, not a creator

- **Genesis 1:27-28** – Humans are made in God's image to create.
- AI can **assist** with research, editing, and illustrations but should not replace theological study.
- AI does not have **wisdom, discernment, or divine insight.**



²⁷ So God created man in his own image, in the image of God he created him; male and female he created them.

²⁸ And God blessed them. And God said to them, “Be fruitful and multiply and fill the earth and subdue it, and have dominion over the fish of the sea and over the birds of the heavens and over every living thing that moves on the earth.”

AI should be a tool. Be careful with anything creative.

Integrity & Transparency

Proverbs 12:22 – “The Lord detests lying lips but delights in trustworthy people.”

- Always **disclose** when AI contributes to research, writing, or visuals.
- AI should **enhance human creativity**, not replace authenticity.



²² Lying lips are an abomination to the Lord, but those who act faithfully are his delight.

All images used are AI-generated

Test Everything

- **1 Thessalonians 5:21** – “Test everything; hold fast what is good.”
- AI is built by secular organizations—its outputs must be tested biblically.
- Never assume AI-generated theological content is **accurate or unbiased**.



²¹... but test everything; hold fast what is good. ²² Abstain from every form of evil.

AI shouldn't replace human connection

- **Ephesians 4:25** – “Put off falsehood and speak truthfully.”
- AI-generated sermons or Bible studies can feel **impersonal and mechanical** and can be theologically incorrect.
- The goal is **assistance, not automation** in ministry.



²⁵ Therefore, having put away falsehood, let each one of you speak the truth with his neighbor, for we are members one of another.

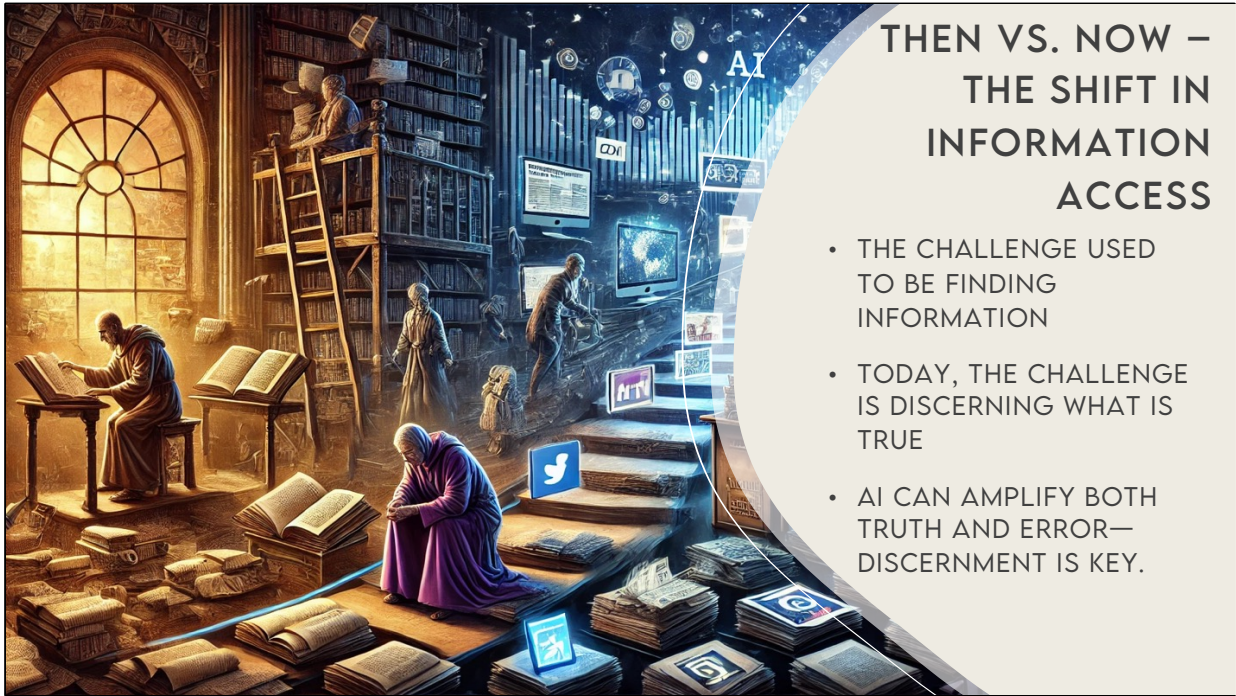
AI cannot replace the Holy Spirit

- **John 16:13** – “The Spirit of truth will guide you into all the truth.”
- AI can provide **information**, but only the Holy Spirit can **bring transformation**.



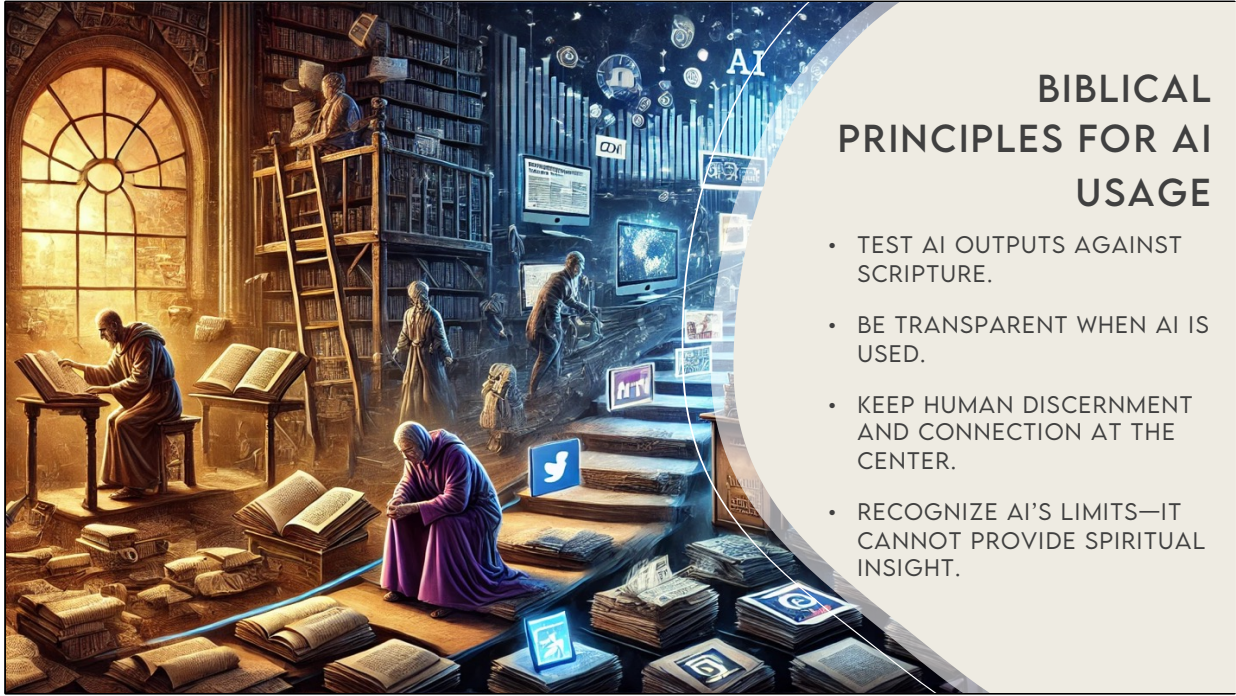
¹³ When the Spirit of truth comes, he will guide you into all the truth, for he will not speak on his own authority, but whatever he hears he will speak, and he will declare to you the things that are to come.





THEN VS. NOW – THE SHIFT IN INFORMATION ACCESS

- THE CHALLENGE USED TO BE FINDING INFORMATION
- TODAY, THE CHALLENGE IS DISCERNING WHAT IS TRUE
- AI CAN AMPLIFY BOTH TRUTH AND ERROR—DISCERNMENT IS KEY.



BIBLICAL PRINCIPLES FOR AI USAGE

- TEST AI OUTPUTS AGAINST SCRIPTURE.
- BE TRANSPARENT WHEN AI IS USED.
- KEEP HUMAN DISCERNMENT AND CONNECTION AT THE CENTER.
- RECOGNIZE AI'S LIMITS—IT CANNOT PROVIDE SPIRITUAL INSIGHT.





AI FOR SERMON & RESEARCH ASSISTANCE

- RESEARCH & PREP: CHATGPT, PERPLEXITY, GEMINI.
- EDITING & WRITING: QUILLBOT, GRAMMARLY, JASPER.

AI FOR GRAPHICS & PRESENTATIONS

- GRAPHICS & FLYERS: CANVA, FOTOR, DESIGNIFY.
- PRESENTATION TOOLS: SLIDES.AI, GAMMA, BEAUTIFUL.AI.
- VISUAL IDEA: BEFORE-AND-AFTER SLIDE EXAMPLES OF AI-GENERATED CHURCH MEDIA.



- Transcripts
 - Riverside.FM
- Summaries, blogs, guides
 - ChatGPT
- Video Clips
 - Sermon Shots
- Podcast
 - Google NotebookLM
- Devotionals
 - ChatGPT
 - Daily Dive 365
 - Sermon Shots

QUESTIONS?

